



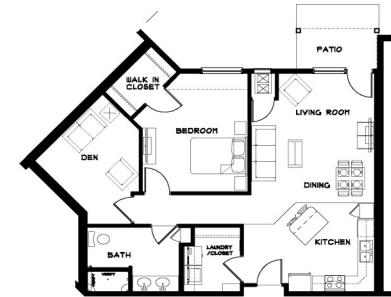
Amenities

In-unit Washers/Dryers | Fitness Center
| Walk-in Closets | Spacious Floor Plans |
Community Room | Elevator | Heat | Air
conditioning | Electricity | Stainless Steel
Appliances | Window Coverings | On-site
Management | Balconies or Patios | Library/
Game Room | Pet Friendly | Business Center |
Roll in Showers or Tubs | Planned Social
Activities | Smoke Free | Screened in Patio

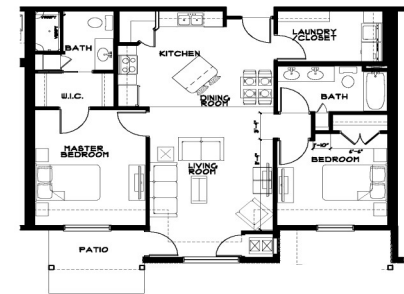
Property Information

Roosevelt Garden Estates offers up-scale independent senior living apartments, located just minutes from shopping, banking, grocery stores, dining and golf course. Roosevelt Garden is proud to offer one or two bedrooms, some with dens, two bath apartment homes. Our unique and spacious floor plans were designed with your comfort and convenience in mind. An elevator is available for easy access to your apartment home no matter what floor it's on.

Floor Plans



1 Bedroom / 1 Bath
1,031 SF



2 Bedroom / 1.75 Bath
1,105 SF

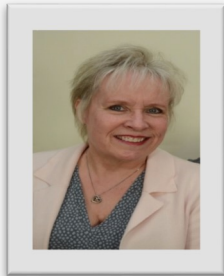


Rents

Includes: Heat, Electric, Cable, Internet, Water and Refuse

- 1 Bedroom/1 Bath: \$1085. - \$1240.
- 1 Bedroom 1 Bath w/Den: \$1395.
- 2 Bedroom/2 Bath: \$1455. - \$1475.
- 2 Bedroom/2 Bath w/Den: \$1675. - \$1745.
- (22) Tuck Under Garages: \$85
- (28) Detached Garages: \$55
- Pet Rent: \$45.

Contact Information

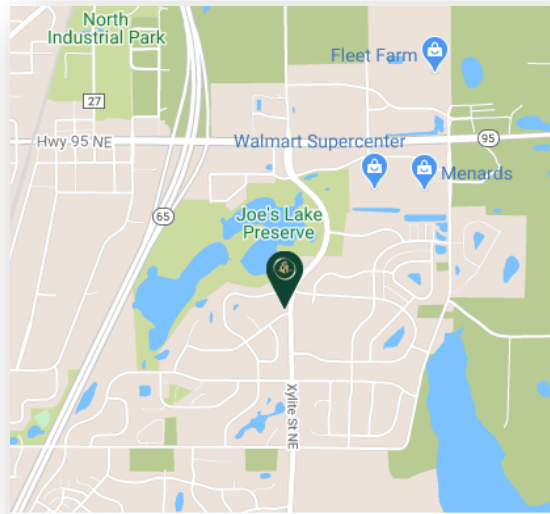


Barb Pearson

For more information, a private tour or to reserve your new home, visit our on-site manager.

Call Barb to make an appointment.

Telephone Number: **(763) 645-1222**



~ Location ~

Conveniently located in the modernized south eastern neighborhood of Cambridge, near Walmart and Menards. Come check us out and see why Roosevelt Garden Estates is a great place to call home!



Professionally Managed by :
INH Properties

For leasing information call
(763) 645-1222
www.inhproperties.com

Roosevelt garden

ESTATES
Luxury Living



*Come Experience
Cambridge's new Premier
Rental Community for ages
55 and better.*

**1900 110th Avenue SE
Cambridge, MN 55008**

For leasing information call
(763) 645-1222
manager.preserve@gmail.com